

Erie County Cancer Incidence & Mortality Report, 2012-2014

October, 2017

Erie County Department of Health
606 West 2nd Street
Erie, PA 16507
Telephone: 814-451-6700
Website: ECDH



CONTENTS

Cancer Incidence

New Cancer Cases and Leading Sites	2
Age Distribution	4
Statistically Significant Differences in Age-Adjusted Incidence Rates	4
Erie County Municipalities	6
Trends in Age-Adjusted Incidence Rates for Selected Leading Sites	8

Cancer Mortality

Cancer Deaths and Leading Sites	10
Age Distribution	12
Statistically Significant Differences in Age-Adjusted Death Rates	12
Erie County Municipalities	14
Trends in Age-Adjusted Death Rates for Selected Leading Sites	16

This report was prepared by Jeff Quirk, Epidemiologist (jqurk@eriecountypa.gov). Data were provided by the Pennsylvania Department of Health, who disclaim responsibility for any of the content that appears herein.

New Cancer Cases & Leading Sites

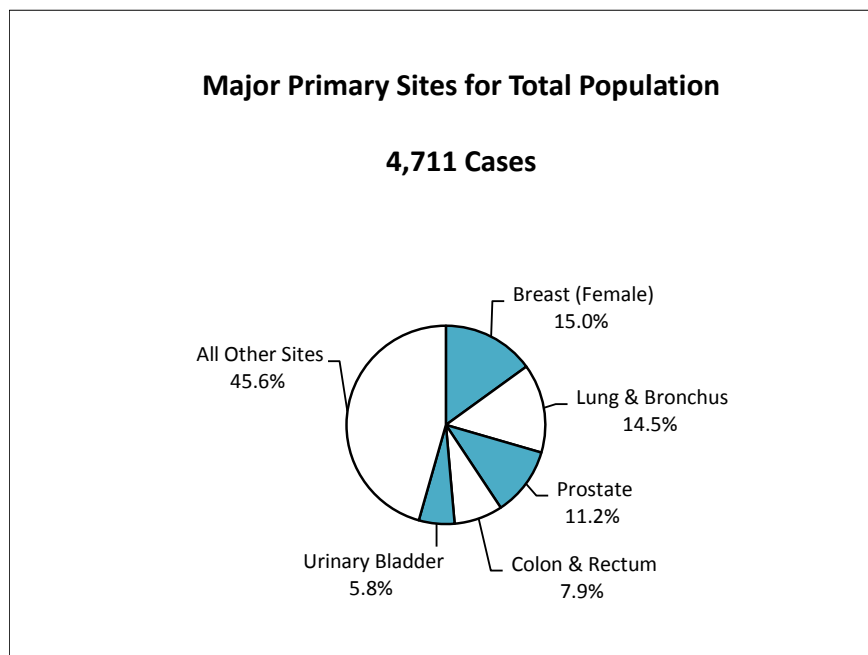
From 2012 to 2014, there were 4,711 new cancer cases (primary invasive cancers and in situ urinary bladder cancers) diagnosed among Erie County residents, for a corresponding age-adjusted incidence rate of 462.2 cases per 100,000 population. Incidence data for all sites combined and the 23 major sites are presented in Table 1.

Overall, cancers were diagnosed in 2,323 males (49.3%) and 2,388 females (50.7%). The incidence rates for males and females were 492.2 and 445.9 cases per 100,000, respectively. For Pennsylvania, the incidence rates were 478.8 for the total population, 515.5 for males, and 457.3 for females.

With respect to race and ethnicity, cancers were diagnosed in 4,363 Whites (92.6%), 237 Blacks (5.0%), 111 persons of Other/Unknown Race (2.4%), and 46 Hispanics/Latinos of any race (1.0%).

Erie County's five leading cancer incidence sites were: (1) female breast (706 cases), (2) lung and bronchus (682 cases), (3) prostate (527 cases), (4) colon and rectum (370 cases), and (5) urinary bladder (275 cases). These sites accounted for 54.4% of all resident diagnoses (Figure 1, Table 1).

Figure 1. Erie County New Cancer Cases, 2012-2014



Among Erie County males, the five leading sites were: (1) prostate (527 cases, 22.7%), (2) lung and bronchus (343 cases, 14.8%), (3) urinary bladder (216 cases, 9.3%), (4) colon and rectum (196 cases, 8.4%), and (5) kidney and renal pelvis (100 cases, 4.3%). These sites accounted for 59.5% of all male diagnoses.

Among Erie County females, the five leading sites were: (1) breast (706 cases, 29.6%), (2) lung and bronchus (339 cases, 14.2%), (3) colon and rectum (174 cases, 7.3%), (4) uterus (152 cases, 6.4%), and (5) thyroid (133 cases, 5.6%). These sites accounted for 63.0% of all female diagnoses.

Table 1. Erie County New Cancer Cases and Age-Adjusted Rates by Site/Type, 2012-2014

Cancer Site/Type	Total Population			Males			Females		
	Cases	County Rate	PA Rate	Cases	County Rate	PA Rate	Cases	County Rate	PA Rate
All Cancer Sites	4,711	462.2	478.8	2,323	492.2	515.3	2,388	445.9	457.3
Brain & Other Nervous System	69	7.8	7.1	37	9.2	8.4	32	6.4	6.0
Breast (Female)	706	132.3	130.3				706	132.3	130.3
Cervix Uteri	27	6.4	7.2				27	6.4	7.2
Colon & Rectum	370	36.8	41.8	196	43.8	48.2	174	31.1	36.5
Esophagus	53	5.1	5.1	41	8.6	9.0	12	**	2.0
Hodgkin Lymphoma	21	2.5	3.3	13	**	3.7	8	**	2.9
Kidney & Renal Pelvis	170	16.7	17.0	100	20.9	22.8	70	13.0	12.0
Larynx	49	4.8	3.7	40	8.9	6.3	9	**	1.5
Leukemia	140	13.8	14.0	85	18.5	18.0	55	10.0	10.9
Liver & Intrahepatic Bile Duct	63	5.8	7.9	46	9.3	12.4	17	**	4.0
Lung & Bronchus	682	65.0	63.8	343	72.0	75.5	339	60.1	55.4
Melanoma of the Skin	153	15.5	23.8	82	17.7	29.7	71	14.6	19.7
Myeloma	52	5.3	6.5	27	5.9	8.2	25	5.0	5.2
Non-Hodgkin Lymphoma	193	19.1	21.2	95	20.7	25.3	98	18.2	17.8
Oral Cavity & Pharynx	114	10.8	11.8	81	16.1	17.5	33	6.0	6.9
Ovary	69	13.6	11.9				69	13.6	11.9
Pancreas	133	12.7	13.5	63	13.3	15.7	70	12.4	11.6
Prostate	527	102.6	98.3	527	102.6	98.3			
Stomach	57	5.4	6.3	40	8.6	9.2	17	**	4.0
Testis	30	7.6	6.4	30	7.6	6.4			
Thyroid	163	18.9	20.3	30	6.7	10.1	133	30.5	30.2
Urinary Bladder	275	26.3	24.5	216	47.0	42.8	59	10	10.8
Uterus	152	27.1	31.9				152	27.1	31.9
All Other Sites	443	NA	NA	231	NA	NA	283	NA	NA

Notes: Age-adjusted rates are per 100,000 population; ** = Less than 20 cases, rate is statistically unreliable; NA = Not Available

Blue = Significantly lower than the rate for PA

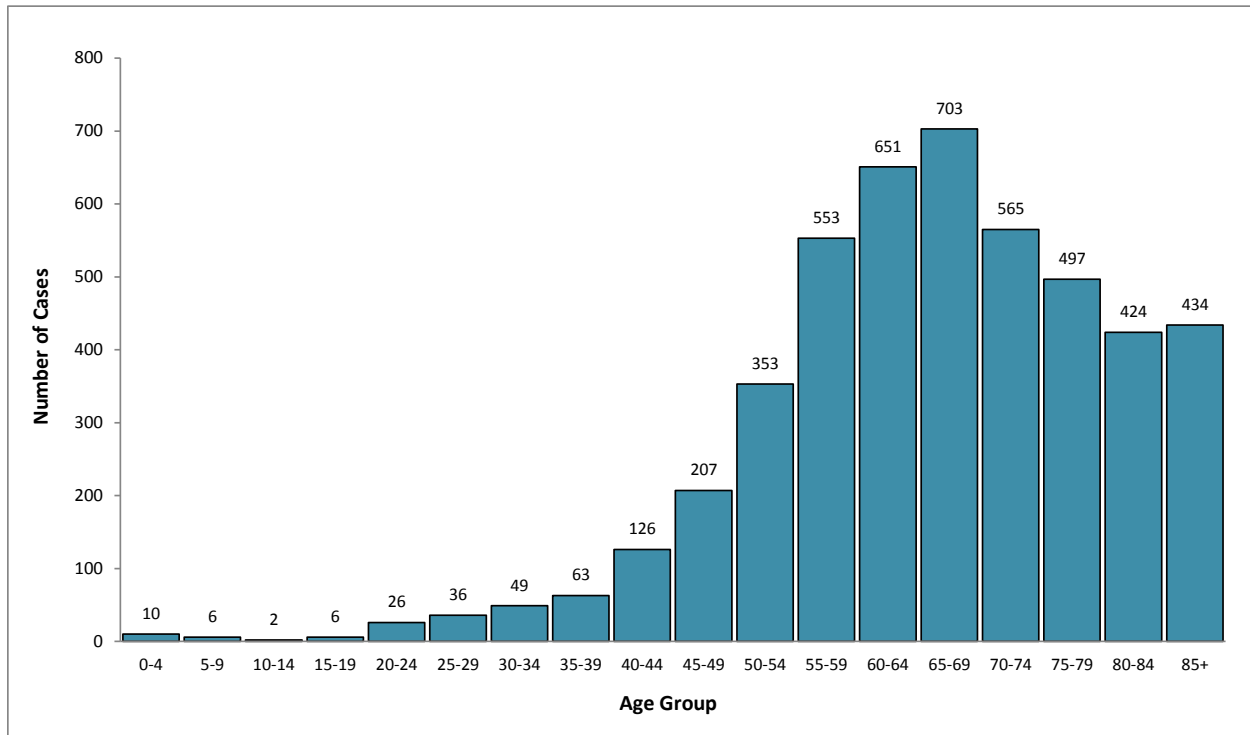
Red = Significantly higher than the rate for PA

Age Distribution

During 2012-2014, the ages at diagnosis ranged from 1 to 101 years. Only 24 cases (0.5%) were diagnosed in persons under the age of 20. However, 3,274 cases (69.5%) occurred in persons 60 and older (Figure 2). The highest number of cases occurred in the 65-69 (703 cases, 14.9%) and 60-64 (651 cases, 13.8%) age groups.

Age group data for all sites combined and the 23 major sites are presented in Table 2.

Figure 2. Erie County New Cancer Cases by Age Group, 2012-2014



Statistically Significant Differences in Age-Adjusted Incidence Rates

Valid age-adjusted rate comparisons for Erie County males and females were possible for a total of 13 cancer sites. Males had a statistically significant higher rate than females for six sites: all sites combined, colon and rectum, kidney and renal pelvis, leukemia, oral cavity and pharynx, and urinary bladder. Females had a significantly higher rate than males for just one site, the thyroid, where the rate was over four times higher (30.5 versus 6.7 cases per 100,000) (Table 1).

With respect to Erie County and Pennsylvania total population rate comparisons, Erie County had a statistically significant lower rate than Pennsylvania for five sites: all sites combined, colon and rectum, uterus, liver and intrahepatic bile duct, and melanoma of the skin.

With respect to males, Erie County had a statistically significant lower rate than Pennsylvania for three sites: all sites combined, melanoma, and thyroid.

With respect to females, Erie County had a statistically significant lower rate than Pennsylvania for three sites: colon and rectum, uterus, and melanoma.

Table 2. Erie County New Cancer Cases by Age Group and Site, 2012-2014

Cancer Site/Type	Age Group																		
	All Ages	0-4	5-9	10-14	15-19	20-24	25-29	30-34	35-39	40-44	45-49	50-54	55-59	60-64	65-69	70-74	75-79	80-84	85+
All Cancer Sites	4,711	10	6	2	6	26	36	49	63	126	207	353	553	651	703	565	497	424	434
Brain & Other Nervous System	69	1	3	0	1	1	3	2	6	4	6	3	9	1	6	7	3	5	8
Breast (Female)	706	0	0	0	0	0	2	5	11	30	60	71	96	120	96	68	55	42	50
Cervix Uteri	27	0	0	0	0	0	2	1	3	5	1	4	1	4	3	2	1	0	0
Colon & Rectum	370	0	0	0	0	0	1	0	5	10	19	37	31	26	50	43	44	51	53
Esophagus	53	0	0	0	0	0	0	0	0	5	0	3	7	11	10	4	3	9	1
Hodgkin Lymphoma	21	0	0	0	0	5	5	2	2	1	0	2	0	1	1	1	0	1	0
Kidney & Renal Pelvis	170	1	1	0	0	0	0	2	4	2	7	19	17	33	27	21	16	14	6
Larynx	49	0	0	0	0	0	0	0	0	1	3	3	5	6	6	6	10	2	7
Leukemia	140	2	1	0	0	1	1	3	0	3	3	8	11	19	15	19	18	20	16
Liver & Intrahepatic Bile Duct	63	0	0	0	0	0	0	1	0	1	1	1	10	13	12	10	4	6	4
Lung & Bronchus	682	0	0	0	0	0	0	0	2	3	21	44	85	88	114	98	88	74	65
Melanoma of the Skin	153	0	0	0	0	4	4	4	6	7	9	12	14	23	19	10	10	15	16
Myeloma	52	0	0	0	0	0	0	0	0	1	3	1	3	4	6	10	11	7	6
Non-Hodgkin Lymphoma	193	0	0	1	0	0	0	5	2	5	11	13	18	27	27	20	21	23	20
Oral Cavity & Pharynx	114	0	0	0	0	1	0	2	0	2	3	12	18	15	16	13	11	10	11
Ovary	69	0	0	0	0	0	2	0	2	2	8	6	10	6	7	11	6	5	4
Pancreas	133	0	0	0	0	0	0	0	0	2	1	7	16	18	17	22	21	14	15
Prostate	527	0	0	0	0	0	0	0	0	2	4	32	73	125	118	82	41	23	27
Stomach	57	0	0	0	0	0	0	2	1	0	0	1	12	1	13	6	5	9	7
Testis	30	0	0	0	0	5	5	4	1	7	3	1	3	0	0	1	0	0	0
Thyroid	163	0	0	0	3	8	3	11	13	17	18	21	18	12	15	10	7	4	3
Urinary Bladder	275	0	0	0	0	0	2	0	1	1	5	14	24	28	47	39	41	33	40
Uterus	152	0	0	0	0	0	0	0	2	2	5	16	28	26	21	16	16	11	9

Erie County Municipalities

During 2012-2014, 8 of Erie County's 38 municipalities had over 100 newly diagnosed cancer cases (Figure 3, Table 3). These municipalities accounted for 75.7% of all diagnoses and included the City of Erie (1,559 cases, 33.1% of all diagnoses), Millcreek Township (1,020 cases, 21.7%), Harborcreek Township (282 cases, 6.0%), Fairview Township (193 cases, 4.1%), Girard Township (134 cases, 2.8%), North East Township (133 cases, 2.8%), Summit Township (132 cases, 2.8%), and the City of Corry (115 cases, 2.4%).

A total of 8 municipalities had 20 or fewer cancer cases, including Leboeuf Township (20 cases), Amity Township (17 cases), Platea Borough (11 cases), Mill Village Borough (9 cases), Cranesville and McKean Boroughs (7 cases each), Wattsburg Borough (6 cases), and Elgin Borough (2 cases).

Figure 3. New Cancer Cases in Erie County Municipalities, 2012-2014

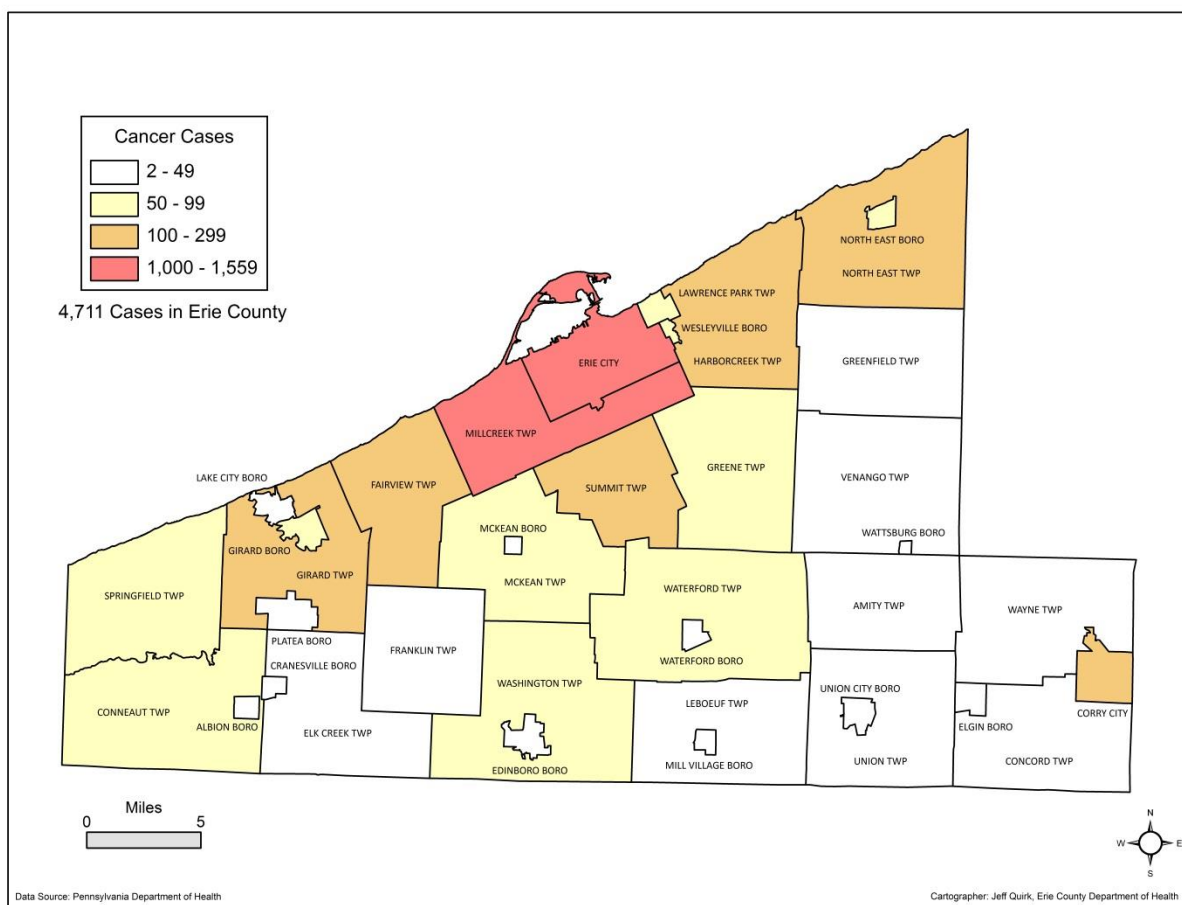
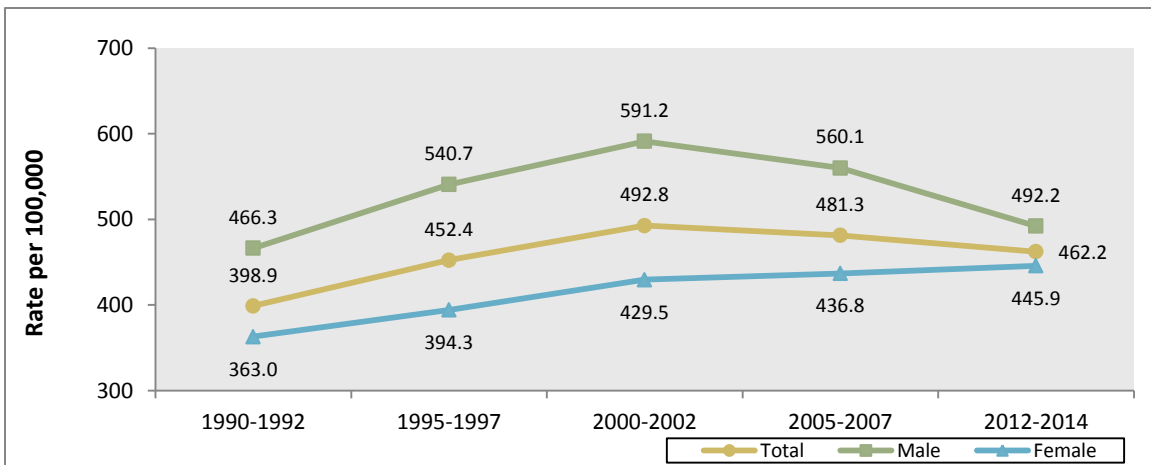


Table 3. New Cancer Cases in Erie County Municipalities for Selected Leading Sites, 2012-2014

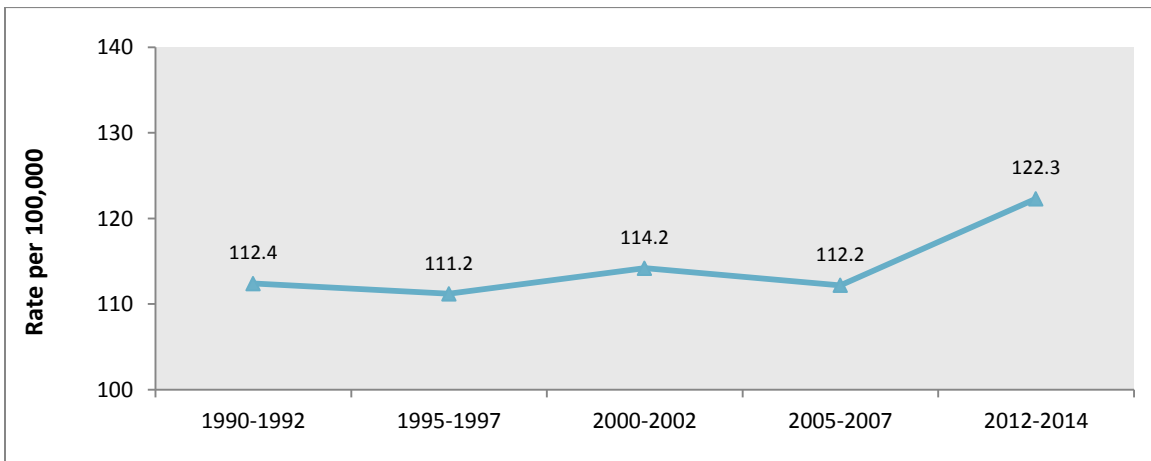
<u>Municipality</u>	<u>All Cancer Sites</u>	<u>Breast (Female)</u>	<u>Lung & Bronchus</u>	<u>Prostate</u>	<u>Colon & Rectum</u>
Albion Borough	26	4	4	3	2
Amity Township	17	3	2	2	2
Concord Township	25	2	1	2	4
Conneaut Township	55	2	6	11	3
City of Corry	115	12	14	8	11
Cranesville Borough	7	1	3	0	0
Edinboro Borough	37	6	4	1	5
Elgin Borough	2	0	0	0	0
Elk Creek Township	37	9	7	4	6
City of Erie	1,559	213	256	168	137
Fairview Township	193	36	22	24	7
Franklin Township	22	3	5	1	1
Girard Borough	58	8	7	5	6
Girard Township	134	14	18	13	11
Greene Township	67	8	10	13	2
Greenfield Township	27	3	2	9	3
Harborcreek Township	282	42	47	36	21
Lake City Borough	37	4	7	6	4
Lawrence Park Township	66	15	6	5	5
LeBoeuf Township	20	2	1	2	4
McKean Borough	7	1	1	1	0
McKean Township	69	14	12	6	6
Millcreek Township	1,020	178	133	99	69
Mill Village Borough	9	0	3	1	1
North East Borough	70	14	6	8	5
North East Township	133	18	15	21	13
Platea Borough	11	1	2	0	4
Springfield Township	77	12	12	9	6
Summit Township	132	20	14	20	11
Union Township	38	5	7	6	1
Union City Borough	49	3	10	5	7
Venango Township	42	6	5	7	1
Washington Township	83	12	15	13	3
Waterford Borough	27	5	7	3	1
Waterford Township	67	17	6	7	7
Wattsburg Borough	6	1	1	1	0
Wayne Township	28	7	1	3	1
Wesleyville Borough	57	5	10	4	0
Erie County	4,711	706	682	527	370

Trends in Age-Adjusted Incidence Rates for Selected Leading Sites

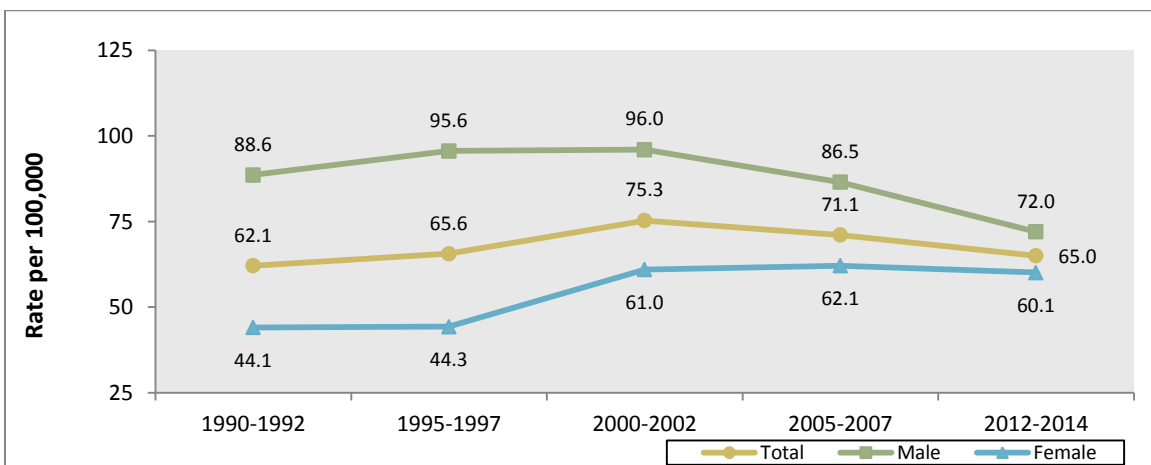
All Cancer Sites



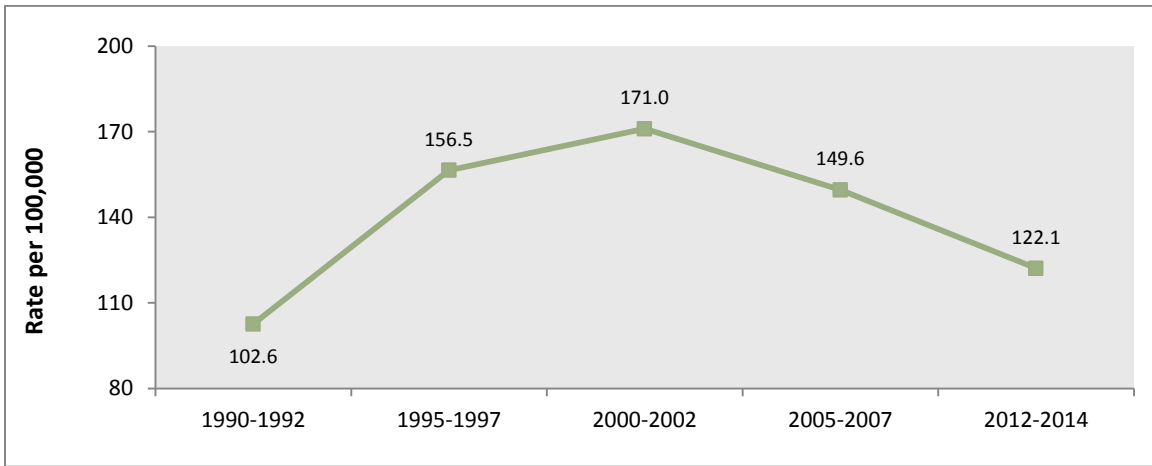
Female Breast



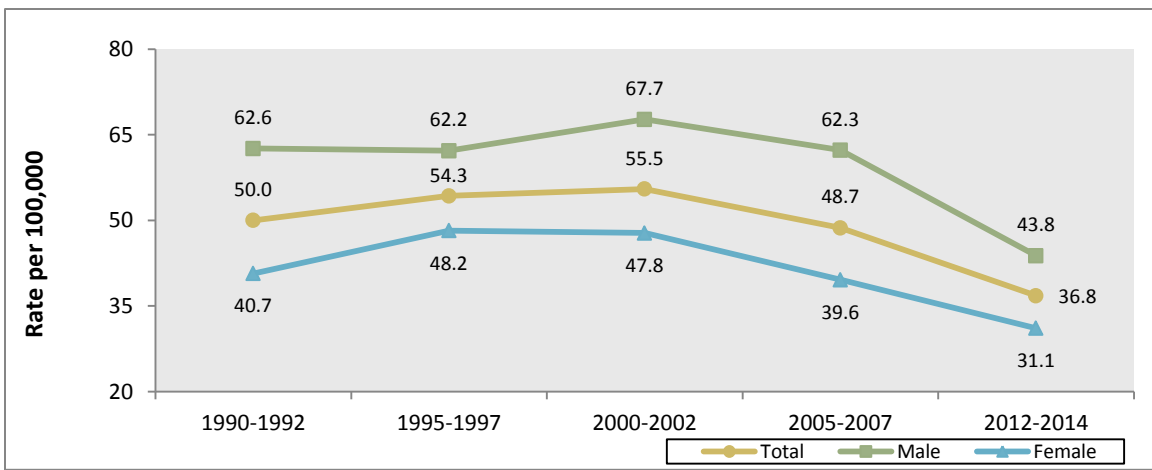
Lung and Bronchus



Prostate



Colon & Rectum



Cancer Deaths & Leading Sites

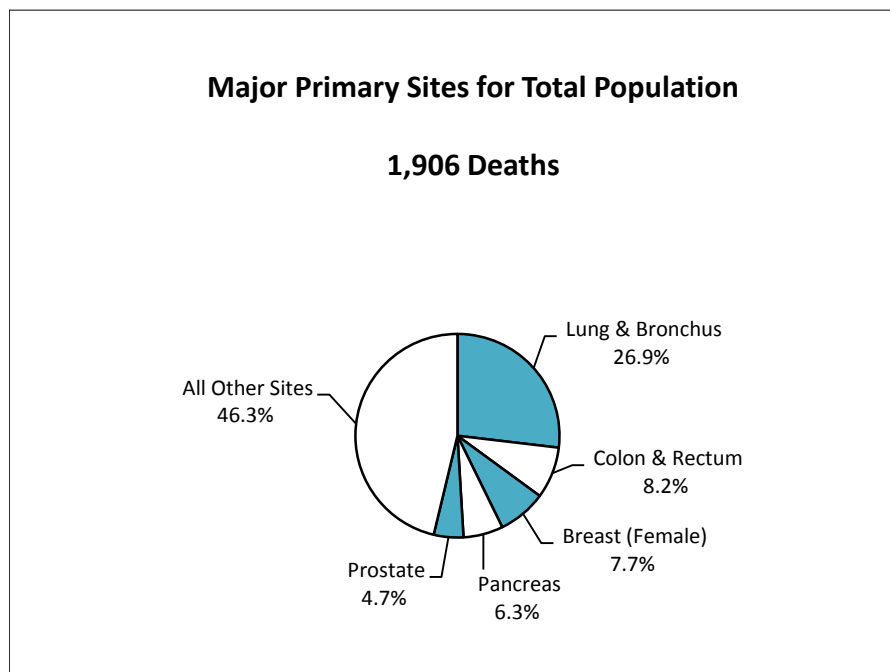
From 2012 to 2014, there were 1,906 cancer deaths (primary malignant neoplasms) among Erie County residents, for a corresponding age-adjusted death rate of 182.3 deaths per 100,000 population. Mortality data for all sites combined and the 23 major sites are presented in Table 4.

Overall, 967 deaths (50.7%) were in males and 939 (49.3%) were in females. The death rates for males and females were 211.9 and 161.5 deaths per 100,000, respectively. For Pennsylvania, the death rates were 170.9 for the total population, 205.3 for males, and 146.8 for females.

With respect to race and ethnicity, cancer deaths occurred in 1,766 Whites (92.7%), 109 Blacks (5.7%), 31 persons of Other/Unknown Race (2.4%), and 14 Hispanics/Latinos of any race (0.7%).

Erie County's five leading cancer mortality sites were: (1) lung and bronchus (512 deaths), (2) colon and rectum (156 deaths), (3) female breast (147 deaths), (4) pancreas (120 deaths), and (5) prostate (89 deaths). These sites accounted for 53.7% of all cancer deaths (Figure 3, Table 4).

Figure 3. Erie County Cancer Deaths, 2012-2014



Among Erie County males, the five leading sites were: (1) lung and bronchus (269 deaths, 27.8%), (2) prostate (89 deaths, 9.2%), (3) colon and rectum (79 deaths, 8.2%), (4) pancreas (62 deaths, 6.4%), and (5) esophagus (51 deaths, 5.3%). These sites accounted for 56.9% of all male deaths.

Among Erie County females, the five leading sites were: (1) lung and bronchus (243 deaths, 25.9%), (2) breast (147 deaths, 15.7%), (3) colon and rectum (77 deaths, 8.2%), (4) ovary (60 deaths, 6.4%), and (5) pancreas (58 deaths, 6.2%). These sites accounted for 62.3% of all female deaths.

Table 4. Erie County Cancer Deaths and Age-Adjusted Rates by Site/Type, 2012-2014

Cancer Site/Type	Total Population			Males			Females		
	Cases	County Rate	PA Rate	Cases	County Rate	PA Rate	Cases	County Rate	PA Rate
All Cancer Sites	1,906	182.3	170.9	967	211.9	205.3	939	161.5	146.8
Brain & Other Nervous System	34	3.5	4.3	16	**	5.1	18	**	3.6
Breast (Female)	147	25.9	21.6				147	25.9	21.6
Cervix Uteri	8	**	2.1				8	**	2.1
Colon & Rectum	156	15.0	15.5	79	17.9	18.3	77	12.4	13.3
Esophagus	60	5.8	4.8	51	11.1	8.6	9	**	1.6
Hodgkin Lymphoma	4	**	0.3	2	**	0.4	2	**	0.3
Kidney & Renal Pelvis	57	5.5	3.8	38	7.9	5.4	19	**	2.5
Larynx	9	**	1.1	9	**	2.0	0	**	0.4
Leukemia	69	7.0	6.9	37	8.7	9.2	32	6.0	5.4
Liver & Intrahepatic Bile Duct	62	5.7	6.2	40	8.3	9.2	22	3.7	3.7
Lung & Bronchus	512	49.1	45.0	269	58.1	57.1	243	42.2	36.1
Melanoma of the Skin	24	2.3	2.7	13	**	3.9	11	**	1.9
Myeloma	38	3.8	3.2	23	5.3	4.1	15	**	2.6
Non-Hodgkin Lymphoma	64	5.9	6.1	31	6.8	7.9	33	5.3	4.7
Oral Cavity & Pharynx	22	1.9	2.2	15	**	3.4	7	**	1.2
Ovary	60	10.7	7.8				60	10.7	7.8
Pancreas	120	11.6	11.5	62	13.5	13.5	58	9.8	9.9
Prostate	89	20.7	18.9	89	20.7	18.9			
Stomach	27	2.5	2.8	13	**	4.0	14	**	1.9
Testis	0	**	0.2	0	**	0.2			
Thyroid	3	**	0.5	1	**	0.5	2	**	0.5
Urinary Bladder	55	5.1	4.8	43	9.4	8.3	12	**	2.3
Uterus	27	4.5	5.4				27	4.5	5.4
All Other Sites	259	NA	NA	136	NA	NA	123	NA	NA

Notes: Age-adjusted rates are per 100,000 population; ** = Less than 20 cases, rate is statistically unreliable; NA = Not Available

Blue = Significantly lower than the rate for PA

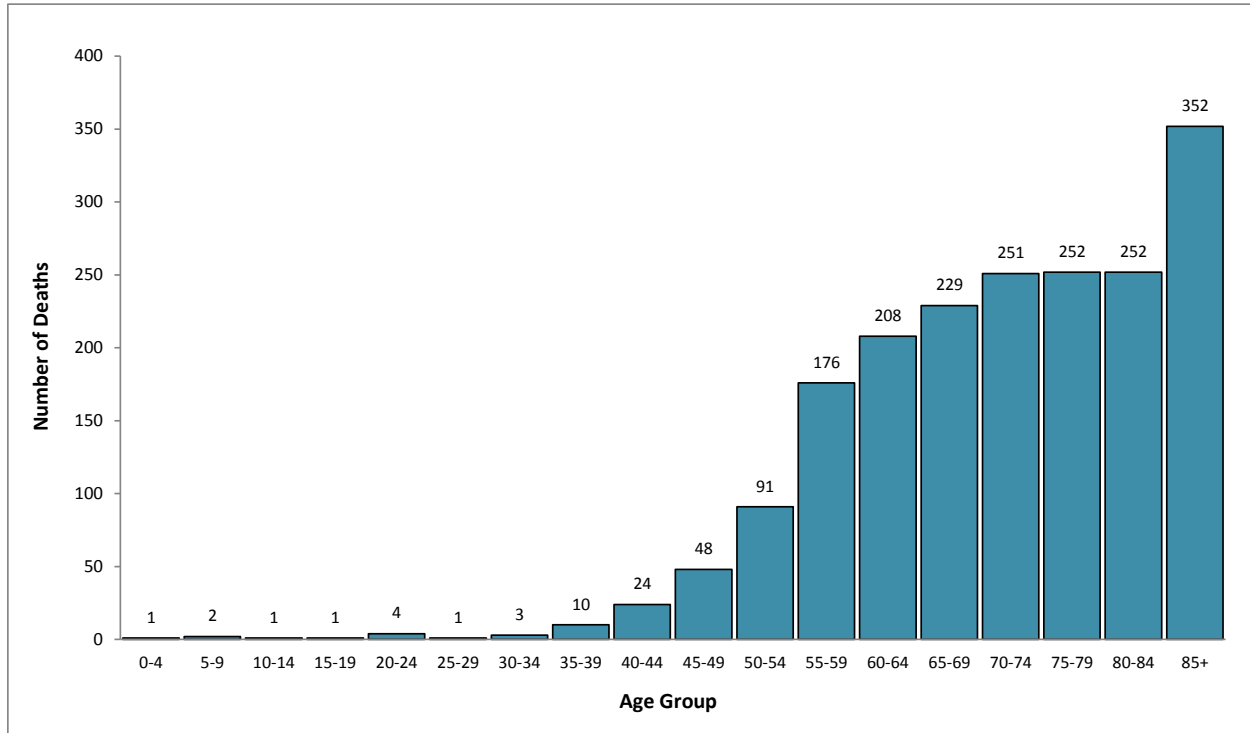
Red = Significantly higher than the rate for PA

Age Distribution

During 2012-2014, cancer deaths ranged in age from 1 to 101 years. Only 95 deaths (5.0%) were in persons under the age of 50. However, 1,522 deaths (81.0%) occurred in persons 60 and older (Figure 4). The highest number of deaths occurred in the 85 and older age group (352 deaths, 18.5%).

Age group data for all sites combined and the 23 major sites are presented in Table 5.

Figure 4. Erie County Cancer Deaths by Age Group, 2012-2014



Statistically Significant Differences in Age-Adjusted Death Rates

Valid age-adjusted rate comparisons for Erie County males and females were possible for a total of seven cancer sites. Males had a statistically significant higher rate than females for three sites: all sites combined, lung and bronchus, and liver and intrahepatic bile duct. Females did not have a significantly higher rate than males for any site (Table 4).

With respect to Erie County and Pennsylvania total population rate comparisons, Erie County had a statistically significant higher rate than Pennsylvania for four sites: all sites combined, female breast, kidney and renal pelvis, and ovary.

With respect to males, Erie County did not have a statistically significant higher or lower rate than Pennsylvania for any site.

With respect to females, Erie County had a statistically significant higher rate than Pennsylvania for four sites: all sites combined, female breast, lung and bronchus, and ovary.

Table 5. Erie County Cancer Deaths by Age Group and Site, 2012-2014

Cancer Site/Type	Age Group																		
	All Ages	0-4	5-9	10-14	15-19	20-24	25-29	30-34	35-39	40-44	45-49	50-54	55-59	60-64	65-69	70-74	75-79	80-84	85+
All Cancer Sites	1,906	1	2	1	1	4	1	3	10	24	48	91	176	208	229	251	252	252	352
Brain & Other Nervous System	34	0	1	1	0	1	0	0	1	1	2	2	6	3	3	6	4	1	2
Breast (Female)	147	0	0	0	0	0	0	0	3	2	8	10	18	17	16	15	15	17	26
Cervix Uteri	8	0	0	0	0	1	0	0	0	1	1	1	1	0	2	1	0	0	0
Colon & Rectum	156	0	0	0	0	0	0	0	1	5	5	8	6	13	11	22	17	22	46
Esophagus	60	0	0	0	0	0	0	0	1	1	1	4	6	6	11	8	7	7	8
Hodgkin Lymphoma	4	0	0	0	0	0	0	0	0	1	0	0	1	0	1	0	0	1	0
Kidney & Renal Pelvis	57	0	0	0	0	0	0	1	0	0	2	3	5	9	9	5	10	7	6
Larynx	9	0	0	0	0	0	0	0	0	0	0	1	0	1	2	1	2	0	2
Leukemia	69	1	1	0	1	0	1	1	1	2	3	2	2	3	4	6	11	12	18
Liver & Intrahepatic Bile Duct	62	0	0	0	0	0	0	1	0	0	0	3	8	15	9	7	7	7	5
Lung & Bronchus	512	0	0	0	0	0	0	0	2	3	18	22	55	58	81	73	71	65	64
Melanoma of the Skin	24	0	0	0	0	0	0	0	0	0	1	2	2	3	1	5	2	4	4
Myeloma	38	0	0	0	0	0	0	0	0	1	0	1	1	5	2	5	8	10	5
Non-Hodgkin Lymphoma	64	0	0	0	0	0	0	0	0	0	0	4	2	8	6	9	13	4	18
Oral Cavity & Pharynx	22	0	0	0	0	0	0	0	0	0	0	0	5	4	2	1	2	2	6
Ovary	60	0	0	0	0	0	0	0	0	1	1	1	6	5	9	12	14	5	6
Pancreas	120	0	0	0	0	0	0	0	0	2	2	2	8	18	13	21	22	16	16
Prostate	89	0	0	0	0	0	0	0	0	0	0	0	2	3	7	10	9	18	40
Stomach	27	0	0	0	0	0	0	0	0	1	1	0	4	1	3	4	2	4	7
Testis	0	0	0	0	0	0	0	0	0	0	0	0	0	0	0	0	0	0	0
Thyroid	3	0	0	0	0	0	0	0	0	0	0	0	1	0	1	0	0	0	1
Urinary Bladder	55	0	0	0	0	0	0	0	0	0	0	2	5	8	3	8	6	10	13
Uterus	27	0	0	0	0	0	0	0	0	0	1	1	4	3	2	2	5	3	6

Erie County Municipalities

During 2012-2014, 6 of Erie County's 38 municipalities had over 50 cancer deaths (Figure 5, Table 6). These municipalities accounted for 71.4% of all deaths and included the City of Erie (651 deaths, 34.2% of all deaths), Millcreek Township (407 deaths, 21.4%), Harborcreek Township (125 deaths, 6.6%), Fairview Township (68 deaths, 3.6%), the City of Corry (58 deaths, 3.0%), and Girard Township (53 deaths, 2.8%).

A total of 20 municipalities had 20 or fewer cancer deaths, ranging from 20 deaths in Edinboro and Waterford Boroughs to 1 death in Cranesville, Elgin, and McKean Boroughs.

Figure 5. Cancer Deaths in Erie County Municipalities, 2012-2014

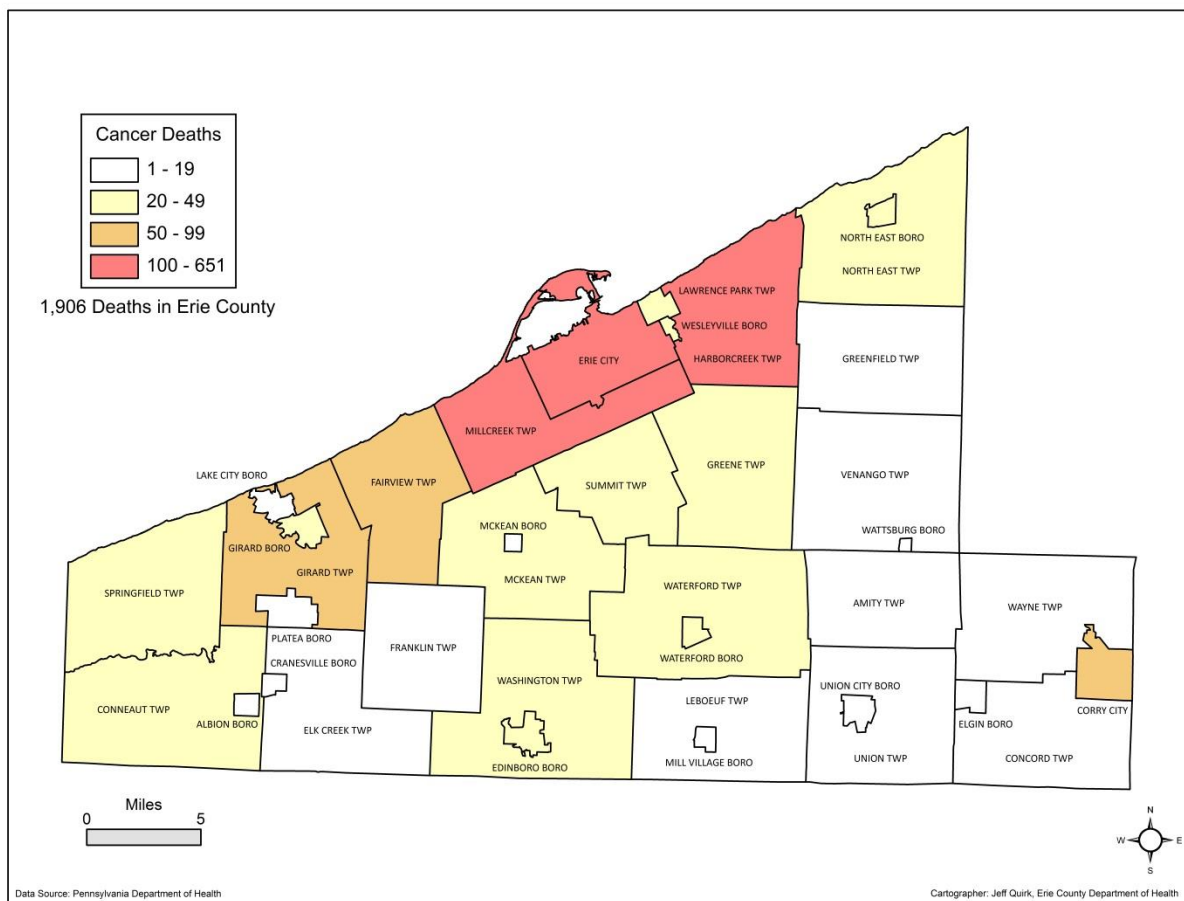
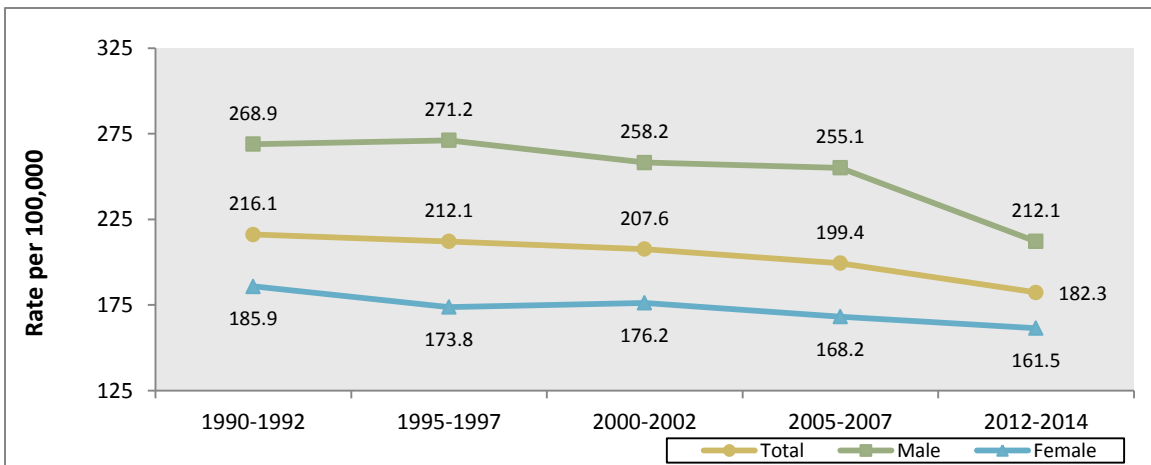


Table 6. Cancer Deaths in Erie County Municipalities for Selected Leading Sites, 2012-2014

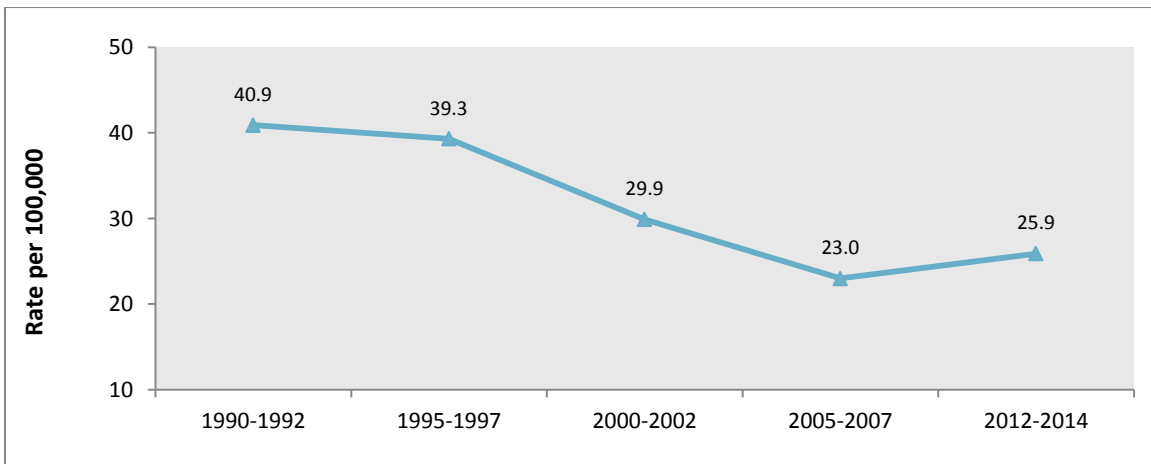
<u>Municipality</u>	<u>All Cancer Sites</u>	<u>Breast (Female)</u>	<u>Lung & Bronchus</u>	<u>Prostate</u>	<u>Colon & Rectum</u>
Albion Borough	10	1	4	1	1
Amity Township	7	2	2	0	1
Concord Township	6	0	1	1	1
Conneaut Township	22	1	6	1	1
City of Corry	58	4	18	3	5
Cranesville Borough	1	0	1	0	0
Edinboro Borough	20	2	4	0	5
Elgin Borough	1	0	0	0	0
Elk Creek Township	12	1	5	0	0
City of Erie	651	55	190	28	48
Fairview Township	68	7	13	4	1
Franklin Township	10	0	3	1	0
Girard Borough	30	0	6	1	2
Girard Township	53	2	17	1	2
Greene Township	29	4	7	1	1
Greenfield Township	7	1	3	0	0
Harborcreek Township	125	8	32	4	11
Lake City Borough	15	1	5	0	0
Lawrence Park Township	25	2	6	0	2
LeBoeuf Township	8	0	0	0	0
McKean Borough	1	0	1	0	0
McKean Township	36	1	10	1	1
Millcreek Township	407	33	105	20	39
Mill Village Borough	5	0	1	0	0
North East Borough	29	4	8	3	5
North East Township	49	1	10	3	9
Platea Borough	2	0	1	0	0
Springfield Township	27	0	7	1	4
Summit Township	34	4	6	3	3
Union Township	19	1	3	2	4
Union City Borough	17	0	6	1	3
Venango Township	9	0	3	0	0
Washington Township	31	3	8	3	2
Waterford Borough	20	3	4	1	0
Waterford Township	23	3	7	2	1
Wattsburg Borough	3	0	1	0	1
Wayne Township	11	2	1	2	0
Wesleyville Borough	25	1	7	1	3
Erie County	1,906	147	512	89	156

Trends in Age-Adjusted Death Rates for Selected Leading Sites

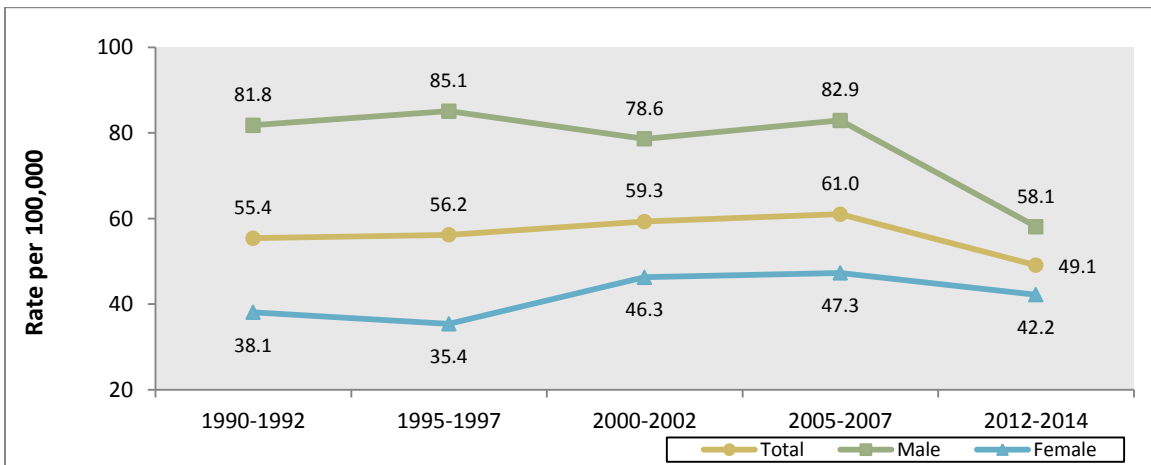
All Cancer Sites



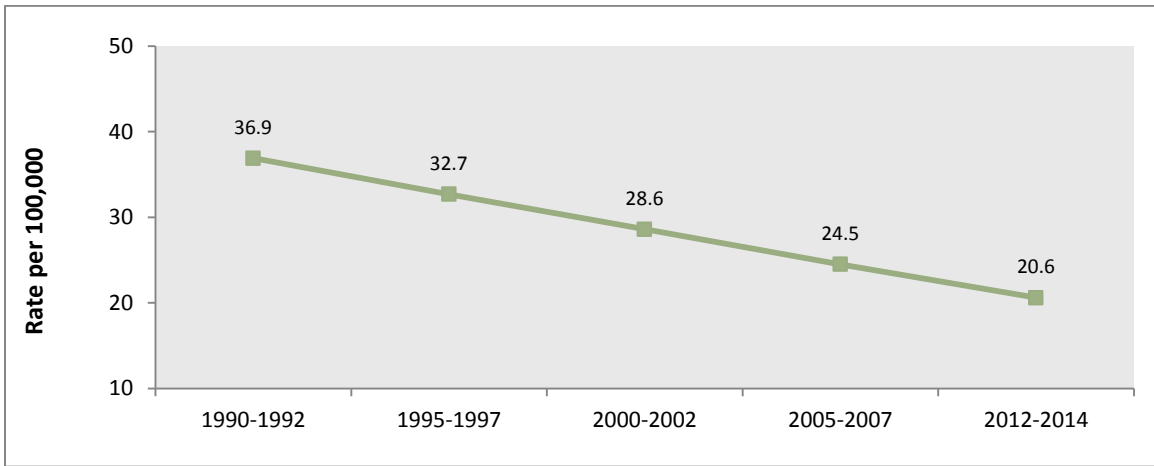
Female Breast



Lung and Bronchus



Prostate



Colon & Rectum

